

# Inheriting 'The System'

How to share a story that is not yours




# Form, Identification and Presence

How organisational culture is developed



# Three Things to Remember





# You Inherit the System



Intention  
wins over  
Expectation





The System is not  
Permanent



# Your Facilitator

Luke Rodgers BEM

Founder of The Care Leaders

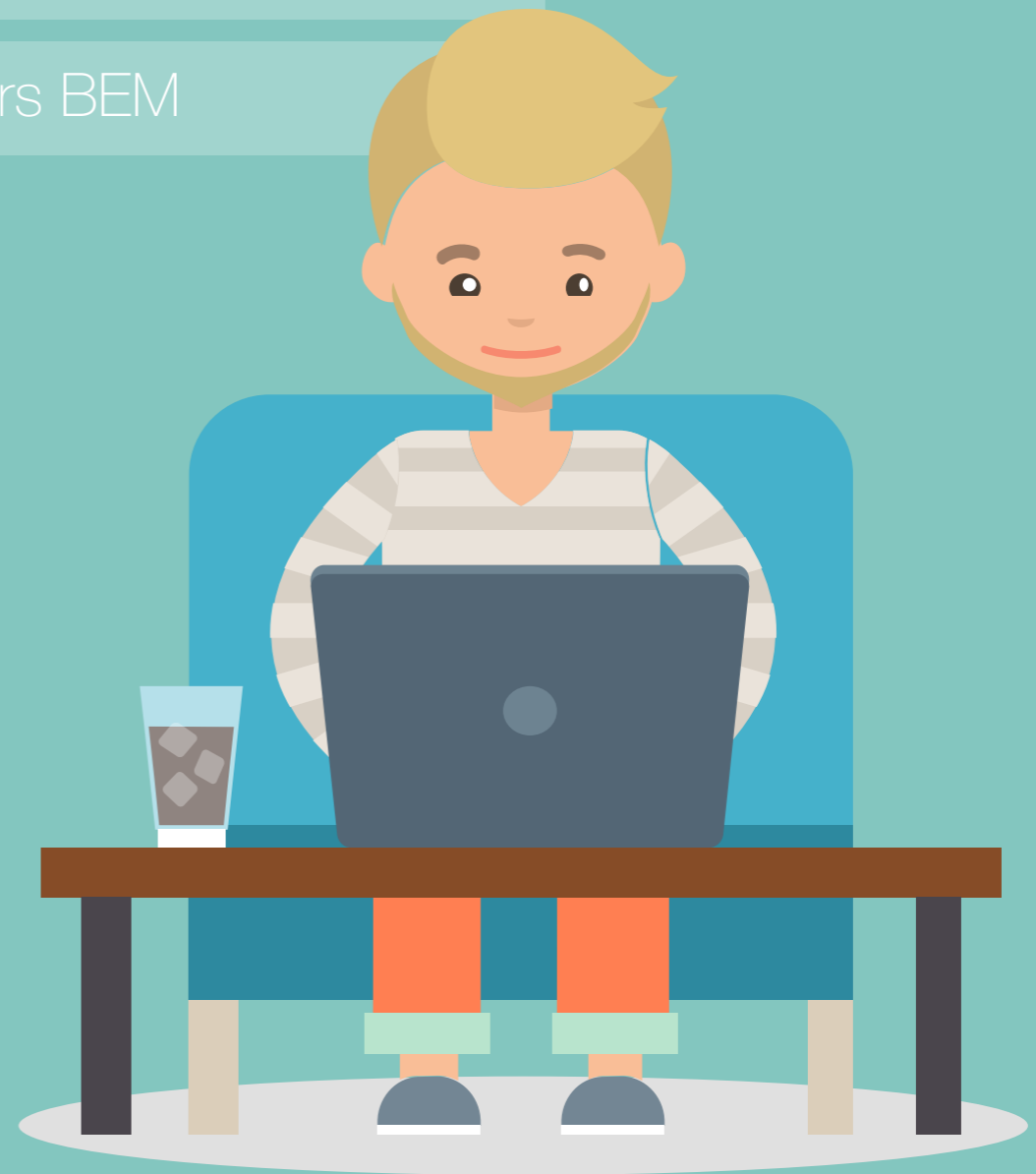
- Award winning social enterprise

Social Entrepreneur

- Foster Focus, Care Cookbook, Back Light Cinematic, Care Leader Fellowship.

Storyteller

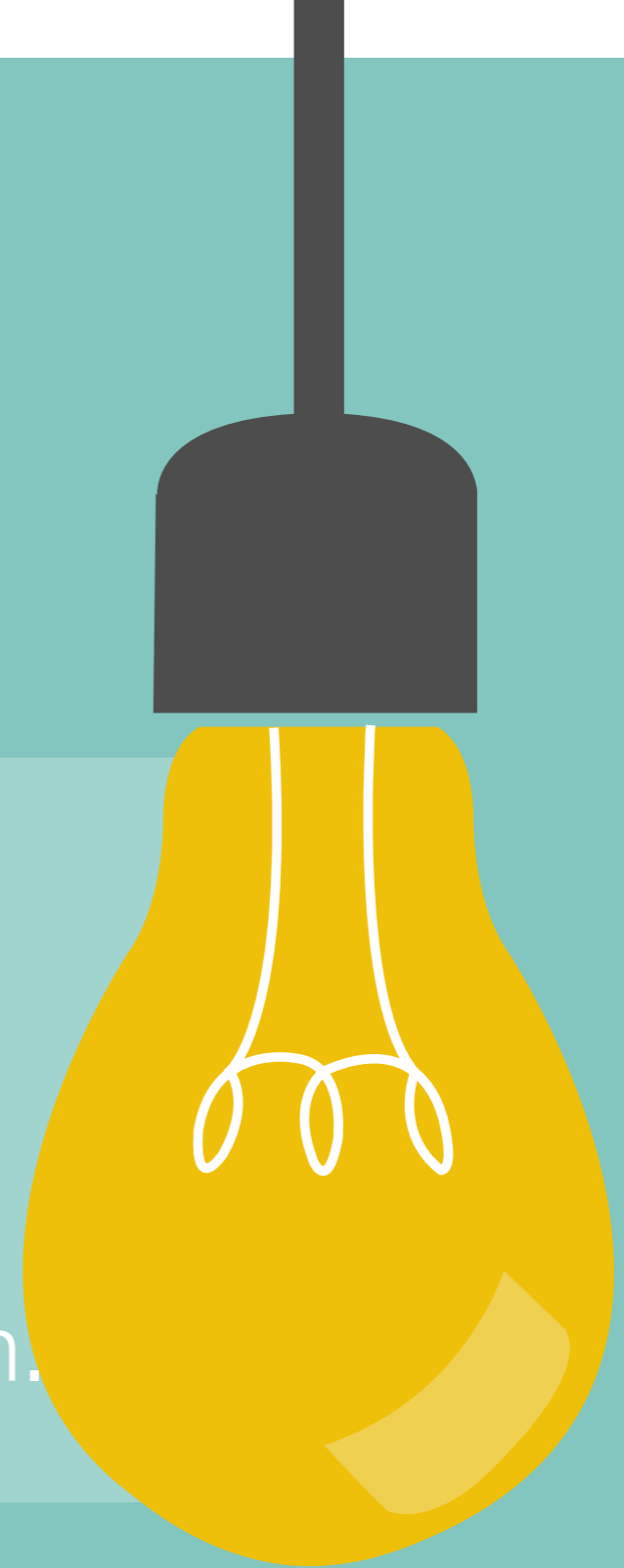
- Sharing experience to inspire growth



# Storytelling

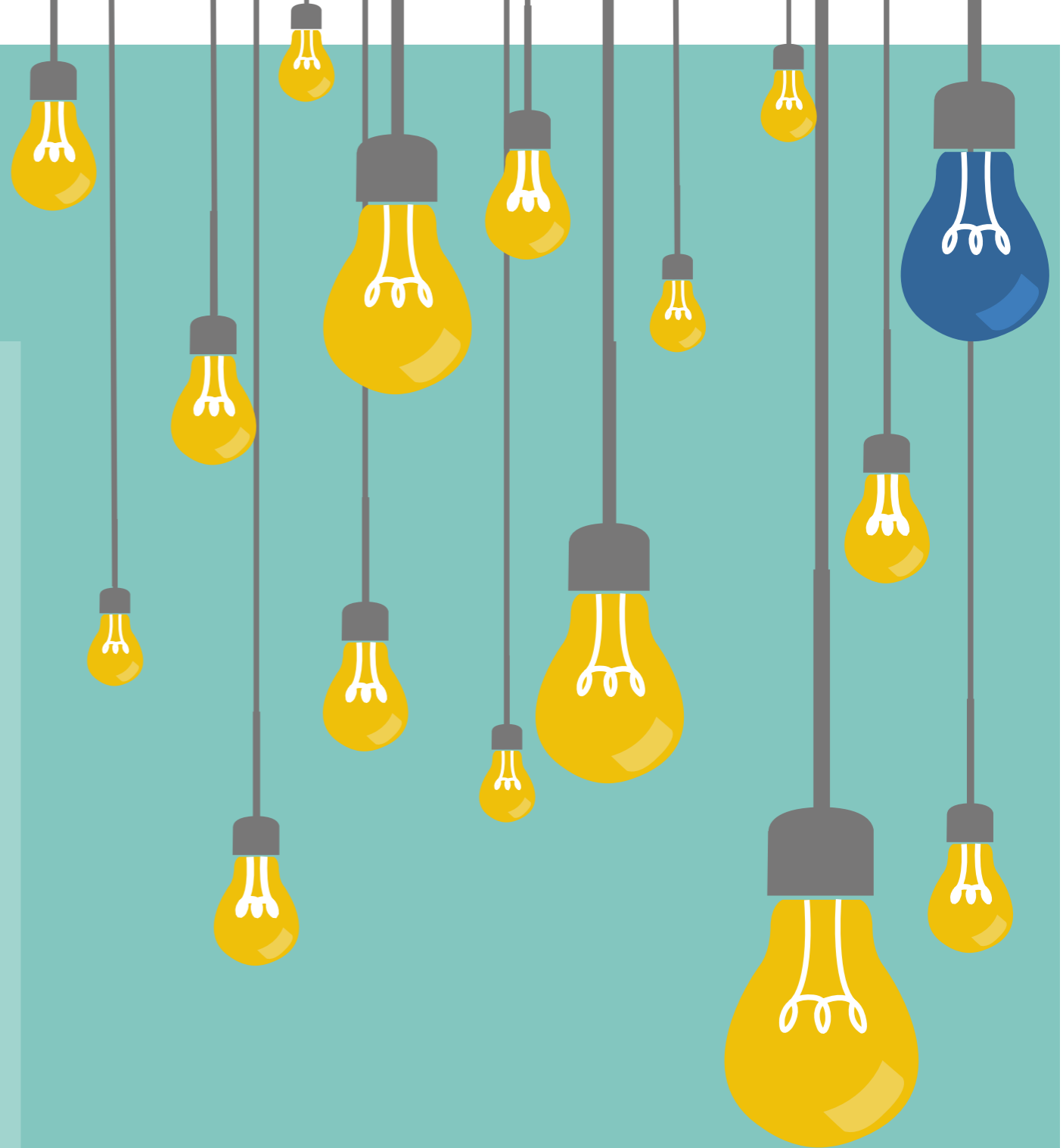
Empathy, Creativity and Liberation

Stories invoke empathy;  
empathy sparks imagination;  
imagination ignites creativity;  
creativity is fuelled by curiosity;  
curiosity gives us a feeling of liberation.





Not everyone  
knows  
the system  
or the story



# dual timetable

Luke  
Rodgers

Year  
11

**Looked After  
Child**

	Monday	Tuesday	Wednesday	Thursday	Friday	Saturday	Sunday
<b>WANTS TO CALL SOCIAL WORKER</b>	Maths <b>LATE</b>	Drama <b>LATE</b>	Chemistry <b>ISOLATION</b>	ICT	Art	Friends	Friends <b>CONTACT</b>
<b>SOCIAL WORKER</b>	English	Art	PE <b>NO KIT</b>	Maths	Music	Friends	Friends <b>CONTACT</b>
<b>SOCIAL WORKER</b>	Lunch	Lunch	Lunch <b>ISOLATION</b>	Lunch	Lunch	Friends <b>CONTACT</b>	Friends <b>CONTACT</b>
<b>SOCIAL WORKER</b>	ICT	Maths <b>NO HOMEWORK</b>	English <b>ISOLATION</b>	Physics <b>LAC REVIEW</b>	Drama	Friends <b>CONTACT</b>	Friends <b>CONTACT</b>
<b>SOCIAL WORKER</b>	Music	Biology <b>'OUTBURST'</b>	Art <b>ISOLATION</b>	Biology <b>NO SHOW</b>	PE	Friends <b>CONTACT</b>	Friends <b>FRIENDS CONTACT</b>
<b>SOCIAL WORKER</b>				<b>NO DETENTION SHOW</b>			
<b>SOCIAL WORKER</b>				<b>NO SHOW</b>			



'Sharing  
information about  
the child'



# The Impact of Written Stories



# Statutory information

Luke is at high risk of absconding  
Persistent young offender with offences including burglary and affray  
Known to deal and has been caught with drugs at school  
Has stolen previous foster carers car in the night  
Low attendance at school and is disengaged with other pupils  
Luke has issues with attachment  
He isolates himself in his room, we are seeking psychological assessments as we think the links to early childhood trauma  
Disruptive behaviour when he is confronted with authority and his 'outbursts' are hard to control  
Luke struggles to follow simple house rules when living in a foster placement  
Hard to build a rapport with Luke as he can be guarded and 'closed'  
Luke is an underachiever

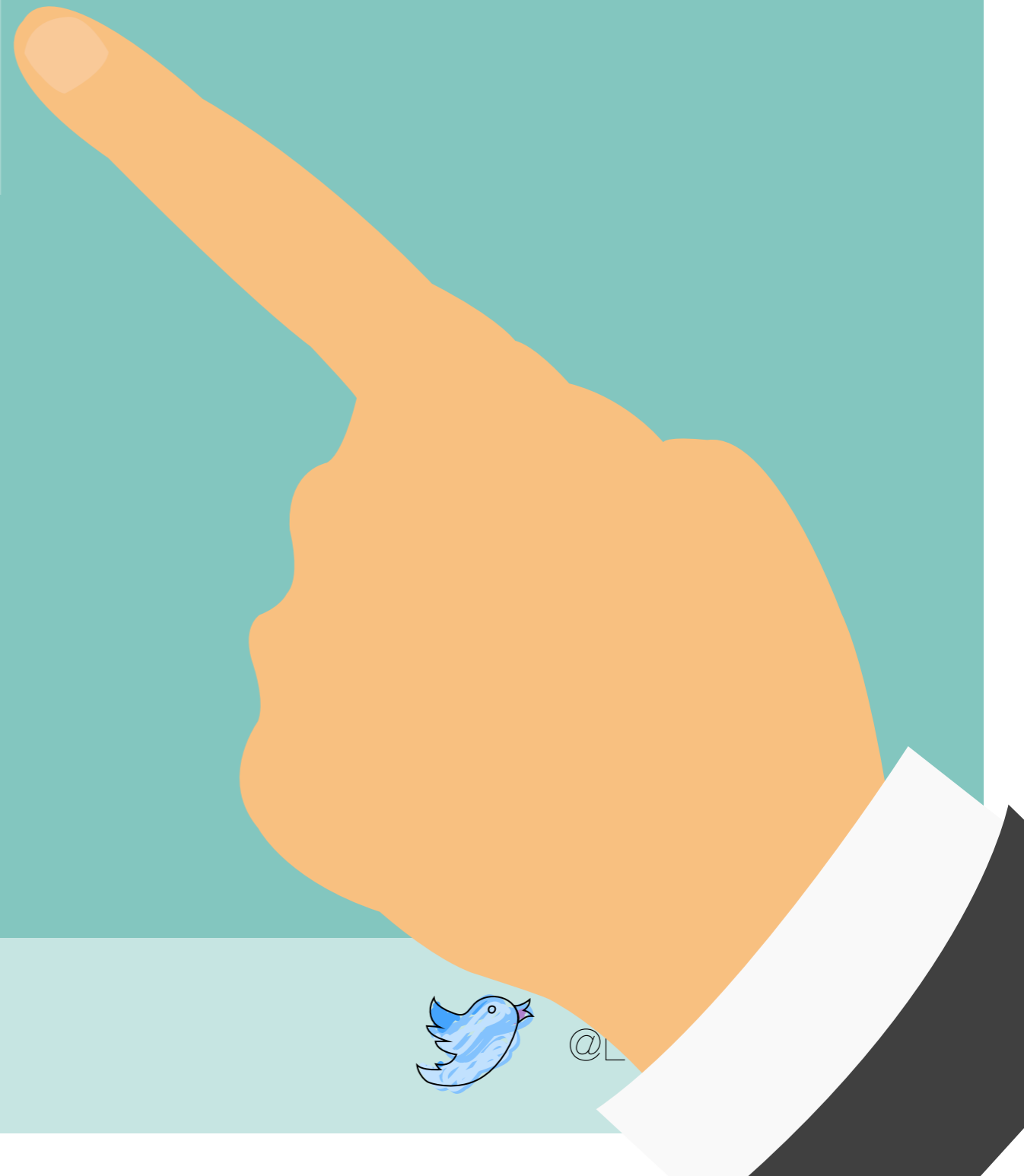


# Moral obligation

Luke was late home and his foster carers reported him missing  
Luke took his playstation from his dads house when he at work, his dad found Luke and attacked him in the street  
Luke tried cannabis with his friends at school  
Luke felt frightened and alone about being in foster care and took his foster carers car to see his mum, he was shaken and deeply regrets his actions  
Luke has been to 11 primary schools and and feels like he's always loosing friends  
Luke parents rejected him from a young age and he has found it hard to find a foster family  
Luke hides away because everyone keeps reminding him his step dad beat him  
Luke is always told where to live without being given a choice, it upsets him that he has to move from a settled foster family  
Luke has lived with so many families, he no longer knows what's right or wrong  
Luke doesn't feel like anyone will ever love him  
Luke is an award winning social entrepreneur (no one expected that one!)



# Our promise to young people



Thanks for  
Listening

